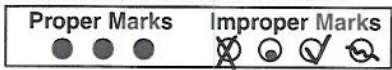
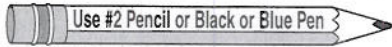


Parent Survey — Special Education

This is a survey for parents of students who received special education services during the 2007-2008 school year. Your responses will help guide efforts to improve services and results for children and families. For each statement below, please select one of the following response choices: **very strongly disagree, strongly disagree, disagree, agree, strongly agree, very strongly agree**. In responding to each statement, think about your experience and your child's experience with special education during the 2007-2008 school year. You may skip any item that you feel does not apply to you or your child.



	Very Strongly Agree	Strongly Agree	Agree	Disagree	Strongly Disagree	Very Strongly Disagree
1. I am considered an equal partner with teachers and other professionals in planning my child's program.	①	②	③	④	⑤	⑥
2. I have been asked for my opinion about how well special education services are meeting my child's needs.	①	②	③	④	⑤	⑥
3. At the IEP meeting, we discussed how my child would participate in statewide assessments.	①	②	③	④	⑤	⑥
4. At the IEP meeting, we discussed accommodations and modifications that my child would need.	①	②	③	④	⑤	⑥
5. All of my concerns and recommendations were documented on the IEP.	①	②	③	④	⑤	⑥
6. Written justification was given for the extent that my child would not receive services in the regular classroom.	①	②	③	④	⑤	⑥
7. I was given information about organizations that offer support for parents of students with disabilities.	①	②	③	④	⑤	⑥
8. I felt part of the decision making process.	①	②	③	④	⑤	⑥
9. My child's evaluation report is written in terms I understand.	①	②	③	④	⑤	⑥
10. Written information I receive is written in an understandable way.	①	②	③	④	⑤	⑥
11. Teachers are available to speak with me.	①	②	③	④	⑤	⑥
12. Teachers treat me as a team member.	①	②	③	④	⑤	⑥
Schools' Efforts to Partner with Parents						
<i>Teachers and administrators:</i>						
13. - seek out parent input.	①	②	③	④	⑤	⑥
14. - show sensitivity to the needs of students with disabilities and their families.	①	②	③	④	⑤	⑥
15. - encourage me to participate in the decision-making process.	①	②	③	④	⑤	⑥
16. - respect my cultural heritage.	①	②	③	④	⑤	⑥
17. - ensure that I have fully understood the Procedural Safeguards (the rules in federal law that protect the rights of parents).	①	②	③	④	⑤	⑥
<i>The School:</i>						
18. - has a person on staff who is available to answer parents' questions.	①	②	③	④	⑤	⑥
19. - communicates regularly with me regarding my child's progress on IEP goals.	①	②	③	④	⑤	⑥
20. - gives me choices with regard to services that address my child's needs.	①	②	③	④	⑤	⑥
21. - offers parents training about special education issues.	①	②	③	④	⑤	⑥

— Please turn page over —>

